

Tavoli

Mastertable



È un tavolo con base centrale in metallo, composta da un profilo pronunciato e da sottili lavorazioni interne. Il piano fisso in appoggio è disponibile in diversi materiali.



BASAMENTO IN METALLO

Il basamento centrale del tavolo Mastertable è in metallo, composto in realtà da due gambe indipendenti, due elementi a forma di "L" disposti di modo da permettere sempre una seduta comoda e agevolare i movimenti. Le due gambe sono formate da una cornice importante e da sottili lavorazioni interne a richiamare la struttura dei paraventi orientali.



PIANO SOTTILE

Mastertable è un tavolo con piano sottile che ben bilancia l'importanza del basamento. La forma è rettangolare con angoli stondati, quasi ovalizzata, disponibile in diversi materiali e finiture.



MASTERTABLE E WENDY

La forma ovalizzata del piano di Mastertable rende facile l'abbinamento con sedie dalle forme morbide. Da non sottovalutare però l'accostamento con una seduta tradizionale in uno stile lineare come quello della sedia Wendy.



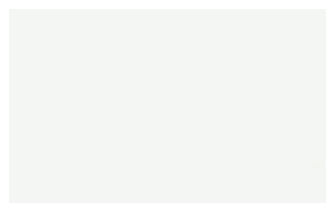
FINITURE

Il tavolo Mastertable può essere personalizzato con varie finiture per il piano in legno, vetro laccato o Gres e anche per il basamento in metallo.

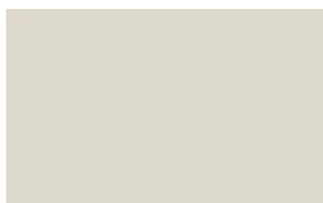
Laccati

LACCATI OPACHI

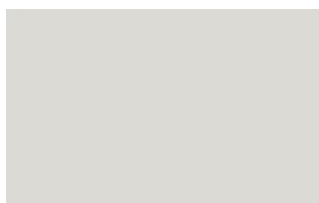
Laccati opachi



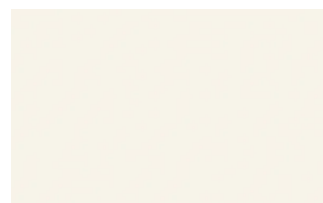
Bianco



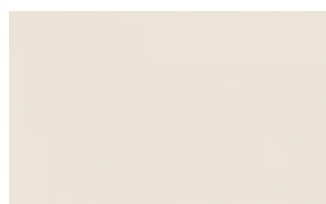
Ghiaccio



Sabbia



Panna



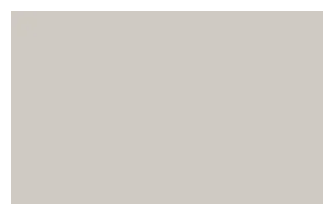
Crema



Grigio seta



Grigio perla



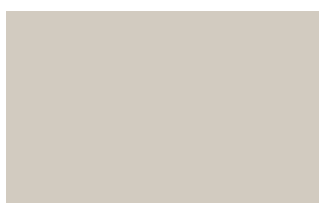
Light grey



Fior di loto



Giallo senape



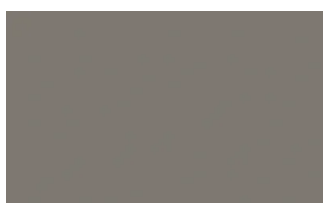
Tortora



Canapa



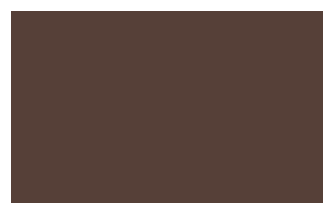
Corda



Dark grey



Terracotta



Moka



Rosso bordeaux



Rosso



Rosa cipria



Bruciato



Carta da zucchero



Grigio blu



Verde pallido



Verde malva



Grigio aston



Celeste



Turchese



Grigio Garda



Blu cobalto



Oceano



Grigio antracite

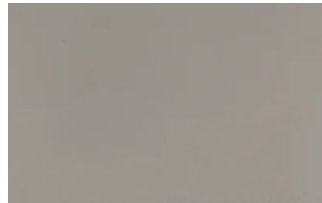


Nero

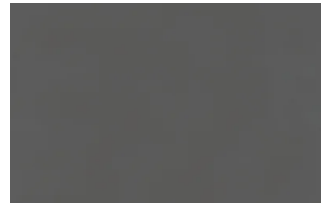
Laccati opachi micalizzati



Titanio



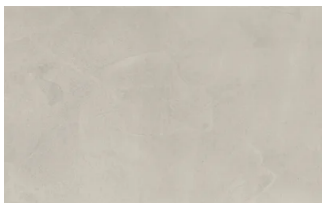
Nichel



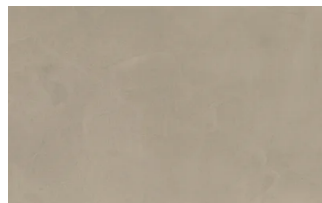
Piombo

SUPERFICI UP

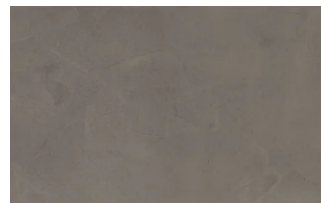
Laccati effetto cemento



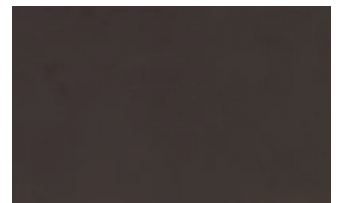
Perla



Argilla

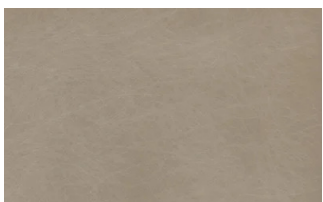


Grafite



Lava

Laccati metallici



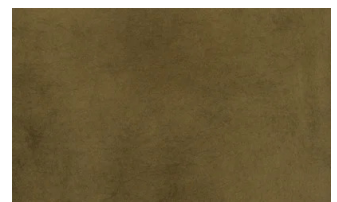
Nichel



Piombo



Titanio



Ossido ottone

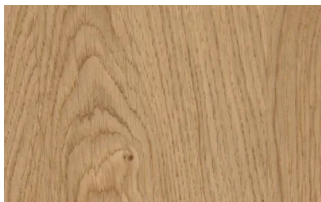


Ossidato bronzo

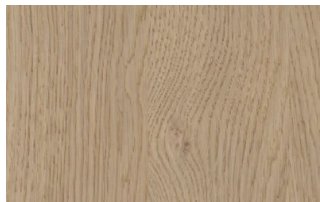
Essenze

ESSENZE 1

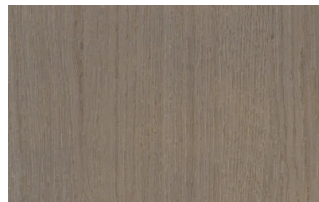
Essenze 1



Rovere naturale



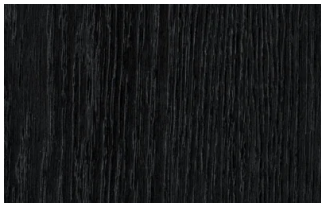
Rovere visone



Rovere cenere



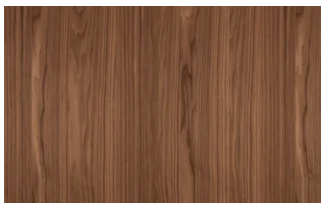
Rovere castoro



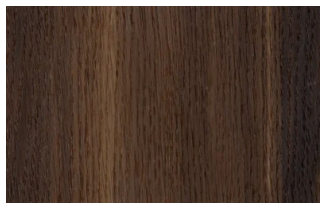
Rovere carbone

ESSENZE 2

Essenze 2



Noce canaletto

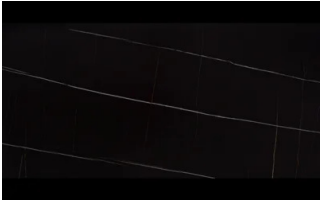


Rovere termotrattato

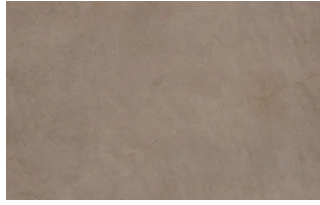
Gres

GRES

Gres opachi



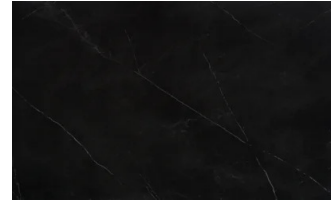
Azalai nero



Jasper moka



Storm grigio



Storm nero

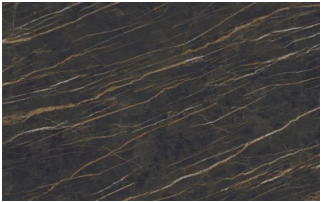


Senda grigio



Pacific bianco

Gres lucidi



Noir desir



Calacatta oro

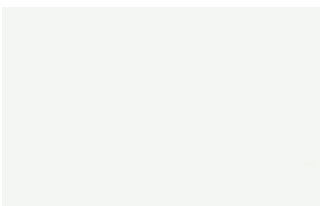


Breche capraia

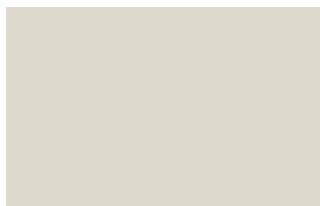
Vetri

VETRI LACCATI

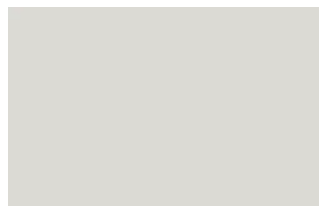
Vetri laccati



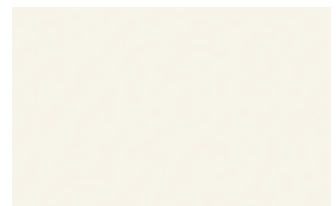
Bianco



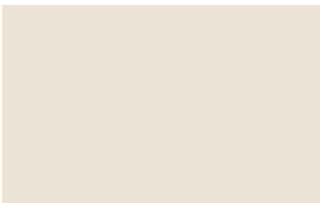
Ghiaccio



Sabbia



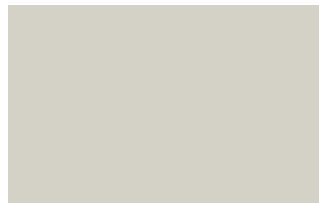
Panna



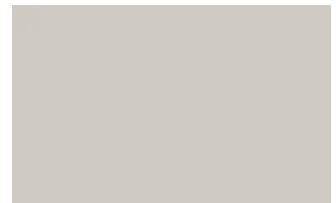
Crema



Grigio seta



Grigio perla



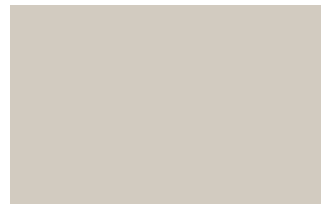
Light grey



Fior di loto



Giallo senape



Tortora



Canapa



Corda



Dark grey



Terracotta



Moka



Rosso bordeaux



Rosso



Rosa cipria



Bruciato



Carta da zucchero



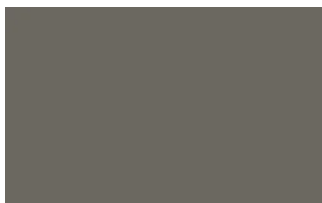
Grigio blu



Verde pallido



Verde malva



Grigio aston



Celeste



Turchese



Grigio Garda



Blu cobalto



Oceano



Grigio antracite



Nero

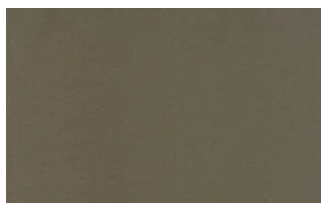
Metalli

METALLI 1

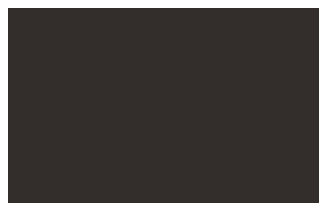
Metalli 1



Nero



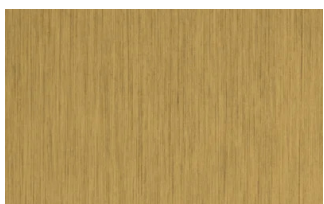
Titanio



Brown

METALLI 2

Metalli 2



Ottone anticato